

VOYAGER 5800 B-GH

5,8 kW



Soundproof cabin

A new project engineering design with a structure of painted steel panels with high resistance to external agents.

Easy access to the inner cabin in case of maintenance services.

Remote control panel

The gen-set control panel was designed to include, in one single panel, the switches, control devices and the protection devices

The components are the following :

- Hour-meter.
- Start-stop button.
- Warning lamps for generator running, 12Vdc auxiliary circuit.
- Magnetothermal switch 20A on 230V output.
- Cable for remote connection.

Engine

- Easy access for feeding system and lubrication's maintenance
- Safety shutdown in case of low oil pressure.
- Oil and fuel filters of easy access.

Alternator

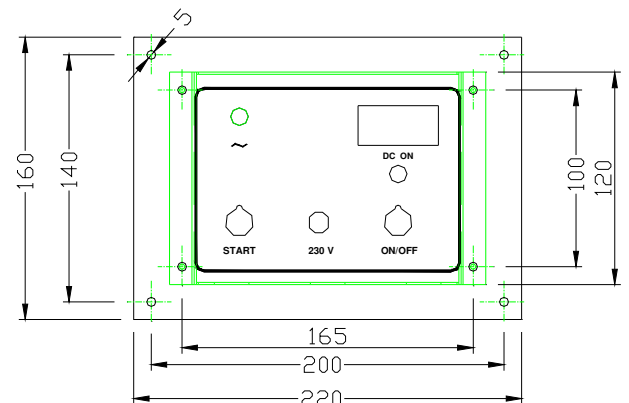
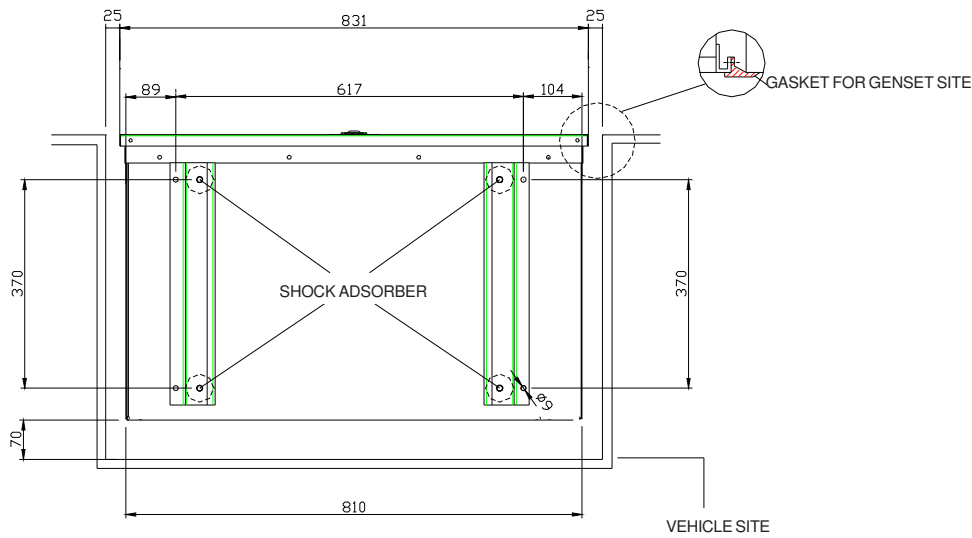
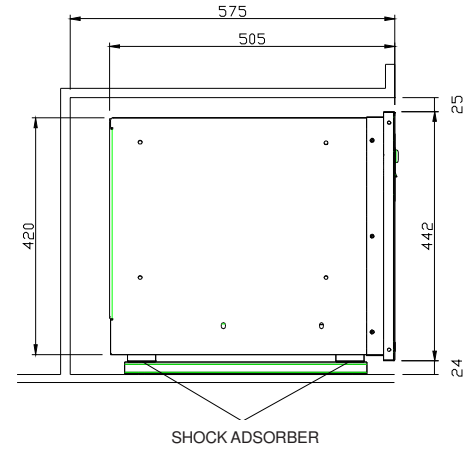
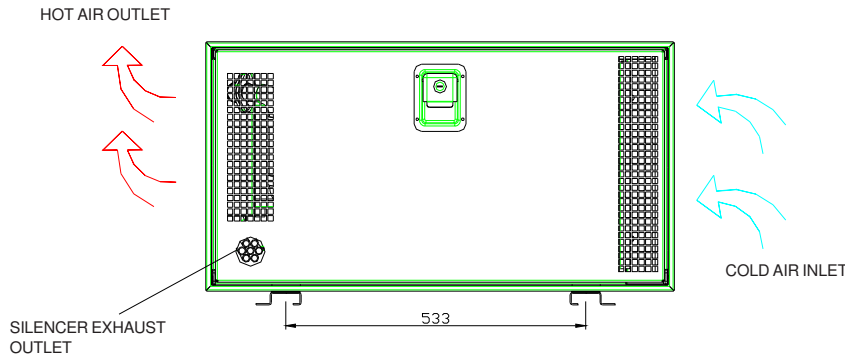
- Synchronous, 2 poles, brushless self-excited, self-regulated.
- Rotor and stator epoxy resin coated against external agents.
- Rotor dynamically balanced.
- Insulation class F.

MODEL	Voyager 5800 B-GH
ALTERNATOR	Synchronous, Self-excited, Self-regulated, 2-poles
Type	Single-phase
Max. Power	5,8 kW
Rated Power	5,2 kW
Power Factor (cos ϕ)	1
Voltage	230 V
Frequency	50 Hz
Protection Level	IP 45

ENGINE	
Type	4-Stroke
Model	Honda GX390 OHV
Cooling	Air
Cylinders	1
Fuel	Gasoline
Power	8 kW / 11 hp
Displacement	389 cm ³
Air intake	Natural
RPM	3000
Oil sump capacity	1,1 L
Consumption (3/4 load)	1,6 L/h
Starter	Electric

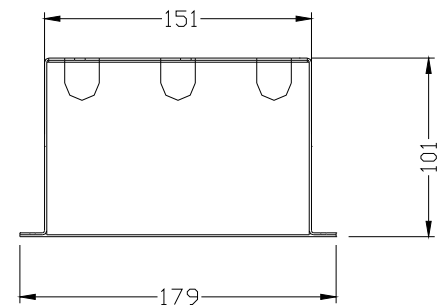
Dimension (L x W x H) mm	810 x 505 x 420 mm
Weight	158 Kg.
Noise level	86 Lwa (61dB(A) at 7m)

VOYAGER 5800 B-GH



DIMENSION BOX FOR REMOTE CONTROL PANEL MHS 5800 H/SA WITHOUT FUEL TANK:

CABLES LENGTH:
 CABLE 9 MT (7x1MM²)
 CABLE 9 MT (3x4MM²)



Dealer: